

 **BOEING**
COMPONENT
MAINTENANCE MANUAL

TO: ALL HOLDERS OF MID-ENTRY-DOOR UPPER TRACK ASSEMBLY COMPONENT MAINTENANCE
MANUAL 52-11-84

REVISION NO. 2 DATED JUL 01/05

HIGHLIGHTS

Pages which have been added or revised are outlined below together with the highlights of the revision. Remove and insert the affected pages as listed and enter Revision No. and date on the Record of Revision Sheet.

CHAPTER/SECTION

AND PAGE NO.

DESCRIPTION OF CHANGE

TITLE PAGE

Add new top assemblies 143T6105-13, -14 as specified in the latest engineering drawing.

1

TR & SB RECORD

1

301

REPAIR 8-1

601

701

1002-1007,1009,

1011-1024

REPAIR 4-1

Changed the dimensioning in REPAIR 4-1 to the track inner surfaces to ease assembly of track.

601-602

52-11-84

HIGHLIGHTS

01.1

Page 1

Jul 01/05



MID-ENTRY-DOOR-UPPER-TRACK ASSEMBLY

PART NUMBERS 143T6105-5,-6,-13,-14

COMPONENT MAINTENANCE MANUAL
WITH
ILLUSTRATED PARTS LIST

52-11-84

TITLE PAGE

Page 1

Jul 01/05

01.1



REVISION RECORD

- Retain this record in front of manual. On receipt of revision, insert revised pages in the manual, and enter revision number, date inserted and initial.

| REVISION NUMBER | REVISION DATE | DATE FILED | BY | REVISION NUMBER | REVISION DATE | DATE FILED | BY |
|-----------------|---------------|------------|----|-----------------|---------------|------------|----|
| | | | | | | | |



TEMPORARY REVISION AND SERVICE BULLETIN RECORD

| BOEING SERVICE BULLETIN | BOEING TEMPORARY REVISION | OTHER DIRECTIVE | DATE OF INCORPORATION INTO MANUAL |
|-------------------------------|---------------------------------|--------------------|---|
| | | PRR B13100-1 | JUL 01/05 |

52-11-84

TR & SB RECORD

01.1

Page 1

Jul 01/05


BOEING
 COMPONENT
 MAINTENANCE MANUAL

| PAGE | DATE | CODE | PAGE | DATE | CODE |
|-------------------------|-----------|------|------------------------|-----------|------|
| 52-11-84 | | | REPAIR 1-1 | | |
| | | | 601 | JUL 10/87 | 01 |
| | | | 602 | BLANK | |
| TITLE PAGE | | | REPAIR 2-1 | | |
| *1 | JUL 01/05 | 01.1 | 601 | JUL 10/87 | 01 |
| 2 | BLANK | | 602 | JUL 10/87 | 01 |
| REVISION RECORD | | | REPAIR 3-1 | | |
| 1 | JUL 10/87 | 01 | 601 | JUL 10/87 | 01 |
| 2 | BLANK | | 602 | JUL 10/87 | 01 |
| TR & SB RECORD | | | REPAIR 4-1 | | |
| *1 | JUL 01/05 | 01.1 | *601 | JUL 01/05 | 01.1 |
| 2 | BLANK | | *602 | JUL 01/05 | 01.1 |
| LIST OF EFFECTIVE PAGES | | | REPAIR 5-1 | | |
| *1 | JUL 01/05 | 01 | 601 | JUL 10/87 | 01 |
| THRU LAST PAGE | | | 602 | BLANK | |
| CONTENTS | | | REPAIR 6-1 | | |
| 1 | JUL 10/87 | 01 | 601 | JUL 10/87 | 01 |
| 2 | BLANK | | 602 | BLANK | |
| INTRODUCTION | | | REPAIR 7-1 | | |
| 1 | JUL 10/87 | 01 | 601 | JUL 10/87 | 01 |
| 2 | BLANK | | 602 | BLANK | |
| DESCRIPTION & OPERATION | | | REPAIR 8-1 | | |
| 1 | JUL 10/87 | 01 | *601 | JUL 01/05 | 01.1 |
| 2 | BLANK | | 602 | BLANK | |
| DISASSEMBLY | | | ASSEMBLY | | |
| *301 | JUL 01/05 | 01.1 | *701 | JUL 01/05 | 01.1 |
| 302 | BLANK | | 702 | BLANK | |
| CHECK | | | ILLUSTRATED PARTS LIST | | |
| 501 | JUL 10/87 | 01 | 1001 | JUL 10/87 | 01 |
| 502 | BLANK | | *1002 | JUL 01/05 | 01.1 |
| REPAIR-GENERAL | | | *1003 | JUL 01/05 | 01.1 |
| 601 | JUL 10/87 | 01 | *1004 | JUL 01/05 | 01.1 |
| 602 | JUL 10/87 | 01 | *1005 | JUL 01/05 | 01.1 |
| | | | *1006 | JUL 01/05 | 01.1 |

* = REVISED, ADDED OR DELETED

52-11-84
 EFFECTIVE PAGES
 CONTINUED Page 1
 01 Jul 01/05

| PAGE | DATE | CODE | PAGE | DATE | CODE |
|------------------------|-----------|-------|------|------|------|
| ILLUSTRATED PARTS LIST | | CONT. | | | |
| *1007 | JUL 01/05 | 01.1 | | | |
| *1008 | JUL 01/05 | 01.1 | | | |
| *1009 | JUL 01/05 | 01.1 | | | |
| *1010 | JUL 01/05 | 01.1 | | | |
| *1011 | JUL 01/05 | 01.1 | | | |
| *1012 | JUL 01/05 | 01.1 | | | |
| *1013 | JUL 01/05 | 01.1 | | | |
| *1014 | JUL 01/05 | 01.1 | | | |
| *1015 | JUL 01/05 | 01.1 | | | |
| *1016 | JUL 01/05 | 01.1 | | | |
| *1017 | JUL 01/05 | 01.1 | | | |
| *1018 | JUL 01/05 | 01.1 | | | |
| *1019 | JUL 01/05 | 01.1 | | | |
| *1020 | JUL 01/05 | 01.1 | | | |
| *1021 | JUL 01/05 | 01.1 | | | |
| *1022 | JUL 01/05 | 01.1 | | | |
| *1023 | JUL 01/05 | 01.1 | | | |
| *1024 | JUL 01/05 | 01.1 | | | |

* = REVISED, ADDED OR DELETED

52-11-84

EFFECTIVE PAGES
 LAST PAGE Page 2
 01 Jul 01/05



TABLE OF CONTENTS

| <u>Paragraph Title</u> | <u>Page</u> |
|---|-------------|
| Description and Operation | 1 |
| Testing/Trouble Shooting (not applicable) | |
| Disassembly | 301 |
| Cleaning. * [1] | |
| Check | 501 |
| Repair. | 601 |
| Assembly. | 701 |
| Fits and Clearances (not applicable) | |
| Special Tools (not applicable) | |
| Illustrated Parts List. | 1001 |

* [1] Special instructions not required. Use standard industry practices.

52-11-84

01 CONTENTS
Page 1
Jul 10/87



INTRODUCTION

The instructions in this manual provide the information necessary to perform maintenance functions ranging from simple checks and replacement to complete shop-type repair.

This manual is divided into separate sections:

- | | |
|--|------------------------------|
| 1. Title Page | 4. List of Effective Pages |
| 2. Record of Revisions | 5. Table of Contents |
| 3. Temporary Revision & Service Bulletin Record | 6. Introduction |
| | 7. Procedures & IPL Sections |

Refer to the Table of Contents for the page location of applicable sections.

The beginning of the REPAIR section includes a list of the separate repairs, a list of applicable standard Boeing practices, and an explanation of the True Position Dimensioning symbols used.

An explanation of the use of the Illustrated Parts List is provided in the Introduction to that section.

All weights and measurements used in the manual are in English units, unless otherwise stated. When metric equivalents are given they will be in parentheses following the English units.

Design changes, optional parts, configuration differences and Service Bulletin modifications create alternate part numbers. These are identified in the Illustrated Parts List (IPL) by adding an alphabetical character to the basic item number. The resulting item number is called an alpha-variant. Throughout the manual, IPL basic item number references also apply to alpha-variants unless otherwise indicated.

52-11-84

INTRODUCTION

01

Page 1

Jul 10/87



MID-ENTRY-DOOR-UPPER-TRACK ASSEMBLY

DESCRIPTION AND OPERATION

1. Description and Operation

A. The mid-entry-door-upper-track assembly (track assembly) supplies rounded tracks for a door trolley. The track assembly is made of two tracks attached by six stringers, two links, one link assembly, and a cam latch. The link assemblies connect the tracks at each end to the door sill and upper fuselage. The cam latch at the lower end moves and holds a door trolley in its latched position.

2. Qualities of Component (approximate)

Length -- 95 inches
Width -- 9 inches
Height -- 11 inches
Weight -- 23 pounds

52-11-84

DESCRIPTION & OPERATION

01

Page 1

Jul 10/87

DISASSEMBLY

NOTE: Disassemble this component only as necessary to isolate defects, do necessary repairs, and put the component back in a serviceable condition.

1. Remove the bracket assembly (20A, IPL Fig. 1), the angle (53A), and items (25 thru 35).

NOTE: Do not disassemble the bracket assembly (20A) unless necessary for repair or replacement.

2. Remove the links (90) and items (70 thru 80).
3. Remove the link assembly (95) and items (70 thru 80).

NOTE: Do not disassemble the link assembly (95) unless necessary for repair or replacement.

4. Remove the bearing retainers (265) and items (250 thru 260).
5. Remove the bearings (270).
6. Move the cam latch (310, 315) to one side to release. Turn and remove the cam latch.

NOTE: The remaining track assembly (1, 3) is the structural framework. Do not disassemble the framework unless necessary for repair or replacement.

52-11-84

DISASSEMBLY

01.1

Page 301

Jul 01/05



CHECK

1. Do a check of all parts for defects. Refer to the approved usual procedures.
2. Do a magnetic particle check of these parts as shown in 20-20-01.
 - A. Link (90, IPL Fig. 1).
 - B. Latch (310, 315).
3. Do a penetrant check of these parts as shown in 20-20-02.
 - A. Link (115, 140).
 - B. Splice (205, 210).
 - C. Track (285, 305, 355, 360, 365, 370).

52-11-84

01
CHECK
Page 501
Jul 10/87

REPAIR – GENERAL1. Content

- A. Instructions for repair, refinish, and replacement are divided into procedures as follows:

| <u>P/N</u> | <u>NAME</u> | <u>REPAIR</u> |
|------------|-------------------------|---------------|
| 141T6180 | LATCH | 1-1 |
| 141T6236 | TRACK | 2-1 |
| 141T6237 | TRACK | 3-1 |
| 143T6105 | TRACK | 4-1 |
| 143T6123 | LINK | 5-1 |
| 143T6124 | TRACK | 6-1 |
| 143T6126 | LINK | 7-1 |
| - - - | REFINISH OF OTHER PARTS | 8-1 |

2. Standard Practices

- A. Refer to these Standard Practices for details of the procedures in the repairs.

| | |
|----------|--|
| 20-30-02 | Stripping of Protective Finishes |
| 20-30-03 | General Cleaning Procedures |
| 20-41-01 | Decoding Table for Boeing Finish Codes |
| 20-41-02 | Application of Chemical and Solvent Resistant Finishes |
| 20-43-01 | Chromic Acid Anodizing |
| 20-50-03 | Bearing Installation and Retention |

3. Materials

NOTE: Equivalent replacements can be used.

- A. Enamel -- BMS 10-11, type II, BAC702 white gloss (Ref 20-60-02)
- B. Primer -- BMS 10-11, type I (Ref 20-60-02)
- C. Sealant -- BMS 5-95 (Ref 20-60-04)

52-11-84

REPAIR-GENERAL

01

Page 601

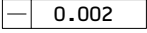
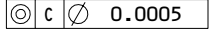
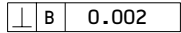
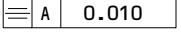
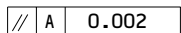
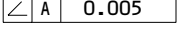
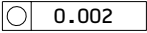
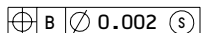
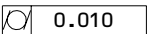
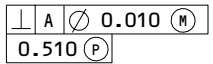
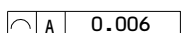
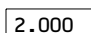
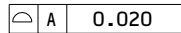
Jul 10/87

4. Dimensioning Symbols

A. Standard True Position Dimensioning Symbols used in applicable repair procedures are shown in Fig. 601.

| | | | |
|----|----------------------------------|-------------|---|
| — | STRAIGHTNESS | ⊕ | THEORETICAL EXACT POSITION OF A FEATURE (TRUE POSITION) |
| ▭ | FLATNESS | ∅ | DIAMETER |
| ⊥ | PERPENDICULARITY (OR SQUARENESS) | S ∅ | SPHERICAL DIAMETER |
| // | PARALLELISM | R | RADIUS |
| ○ | ROUNDNESS | SR | SPHERICAL RADIUS |
| ⊙ | CYLINDRICITY | () | REFERENCE |
| ⌒ | PROFILE OF A LINE | BASIC (BSC) | A THEORETICALLY EXACT DIMENSION USED TO DESCRIBE SIZE, SHAPE OR LOCATION OF A FEATURE FROM WHICH PERMISSIBLE VARIATIONS ARE ESTABLISHED BY TOLERANCES ON OTHER DIMENSIONS OR NOTES. |
| ⌒ | PROFILE OF A SURFACE | OR | |
| ◎ | CONCENTRICITY | DIM | |
| ≡ | SYMMETRY | -A- | DATUM |
| ∠ | ANGULARITY | Ⓜ | MAXIMUM MATERIAL CONDITION (MMC) |
| ↗ | RUNOUT | Ⓛ | LEAST MATERIAL CONDITION (LMC) |
| ↗ | TOTAL RUNOUT | Ⓢ | REGARDLESS OF FEATURE SIZE (RFS) |
| ⊓ | COUNTERBORE OR SPOTFACE | Ⓟ | PROJECTED TOLERANCE ZONE |
| ∇ | COUNTERSINK | FIM | FULL INDICATOR MOVEMENT |

EXAMPLES

| | | | |
|---|--|---|---|
|  0.002 | STRAIGHT WITHIN 0.002 |  C ∅ 0.0005 | CONCENTRIC TO C WITHIN 0.0005 DIAMETER |
|  B 0.002 | PERPENDICULAR TO B WITHIN 0.002 |  A 0.010 | SYMMETRICAL WITH A WITHIN 0.010 |
|  A 0.002 | PARALLEL TO A WITHIN 0.002 |  A 0.005 | ANGULAR TOLERANCE 0.005 WITH A |
|  0.002 | ROUND WITHIN 0.002 |  B ∅ 0.002 Ⓢ | LOCATED AT TRUE POSITION WITHIN 0.002 DIA RELATIVE TO DATUM B, REGARDLESS OF FEATURE SIZE |
|  0.010 | CYLINDRICAL SURFACE MUST LIE BETWEEN TWO CONCENTRIC CYLINDERS, ONE OF WHICH HAS A RADIUS 0.010 INCH GREATER THAN THE OTHER |  A ∅ 0.010 Ⓜ 0.510 Ⓟ | AXIS IS TOTALLY WITHIN A CYLINDER OF 0.010-INCH DIAMETER, PERPENDICULAR TO, AND EXTENDING 0.510-INCH ABOVE, DATUM A, MAXIMUM MATERIAL CONDITION |
|  A 0.006 | EACH LINE ELEMENT OF THE SURFACE AT ANY CROSS SECTION MUST LIE BETWEEN TWO PROFILE BOUNDARIES 0.006 INCH APART RELATIVE TO DATUM PLANE A |  2.000 | EXACT DIMENSION IS 2.000 |
|  A 0.020 | SURFACES MUST LIE WITHIN PARALLEL BOUNDARIES 0.02 INCH APART AND EQUALLY DISPOSED ABOUT TRUE PROFILE | OR 2.000 BSC | |

(NOTE THAT  A 0.020 MAY ALSO APPEAR AS  0.020 A)

True Position Dimensioning Symbols
Figure 601

52-11-84

REPAIR-GENERAL

01

Page 602

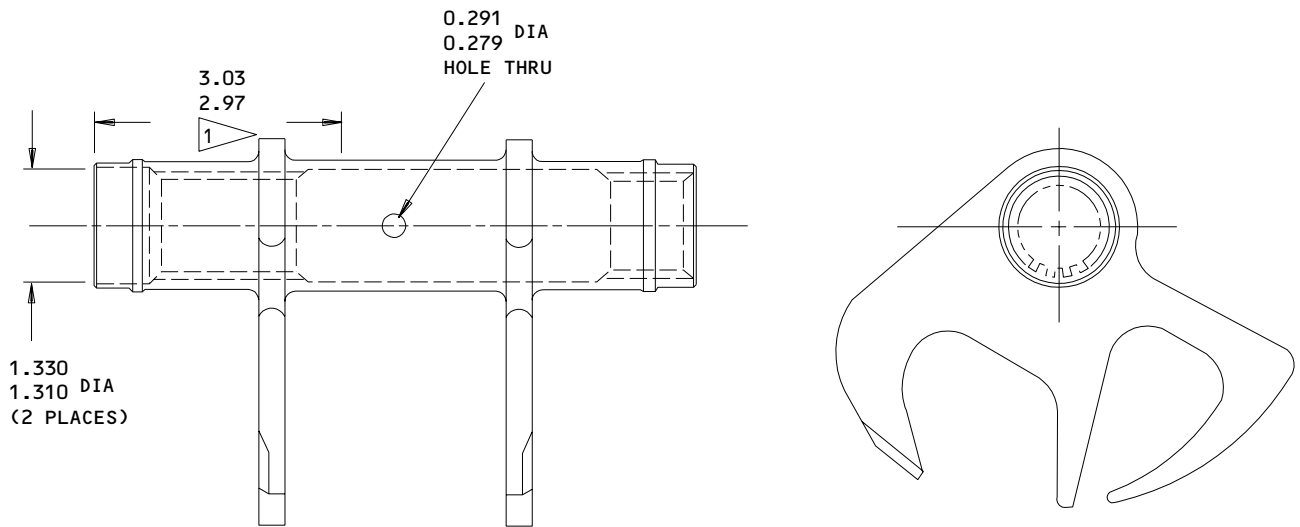
Jul 10/87

CAM LATCH - REPAIR 1-1

141T6180-8, -9

1. Repair

NOTE: This repair gives instructions for the repair of the initial finish. Refer to the Refinish instruction in Fig. 601 and to REPAIR-GENERAL for applicable Standard Practices.



REFINISH

PASSIVATE (F-17.09). DO NOT PASSIVATE THE AREA SHOWN BY THE FLAGNOTE



CADMIUM PLATE (0.0002-0.0004 THICK)
 (F-15.02) THE AREA SHOWN. OPTIONAL:
 CADMIUM PLATE ALL OF THE INNER DIAMETER.

MATERIAL: 15-5PH CRES 180-200 KSI

ALL DIMENSIONS ARE IN INCHES

141T6180-8,-9
 Cam-Latch Track Entry Door Repair
 Figure 601

52-11-84

REPAIR 1-1

01

Page 601

Jul 10/87



TRACK ASSEMBLY – REPAIR 2-1

141T6236-3

NOTE: Refer to REPAIR-GENERAL for applicable Standard Practices. If only the repair of the part's initial finish is necessary, refer to the Refinish instruction, Fig. 601.

1. Bushing Replacement (IPL Fig. 1, Fig. 601)

- A. Remove the bushings (280).
- B. Install the new bushings. Use the procedures given in 20-50-03, but do not use primer. Use wet BMS 5-95 sealant.
- C. Machine the bushings to the dimensions shown.
- D. Seal the bushings with BMS 5-95 sealant.

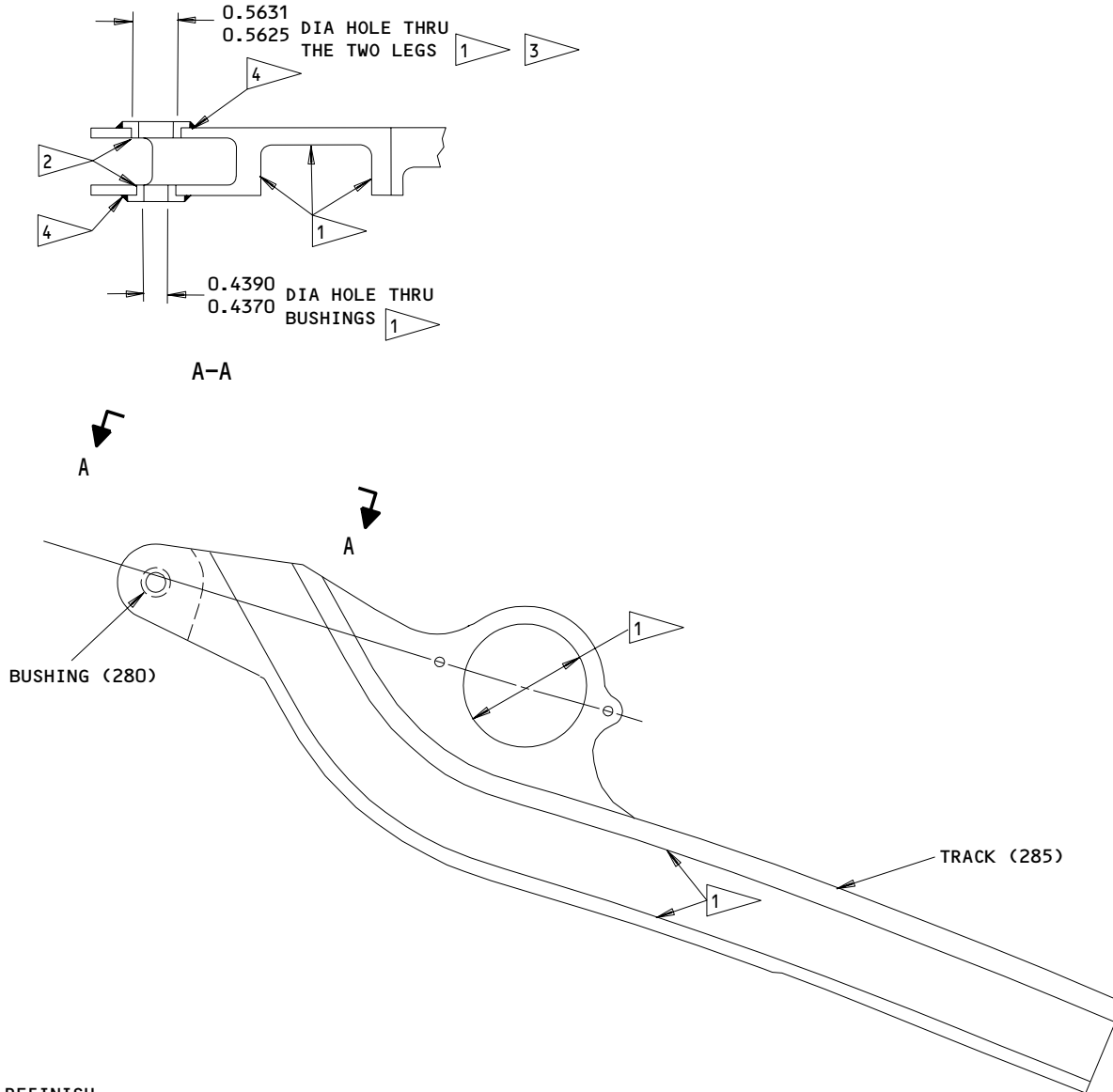
52-11-84

REPAIR 2-1

01

Page 601

Jul 10/87



REFINISH

TRACK (285) -- CHROMIC ACID ANODIZE AND APPLY ONE LAYER OF BMS 10-11, TYPE 1 PRIMER (F-18.13). APPLY ONE LAYER OF BMS 10-11, TYPE II ENAMEL, BAC702 WHITE GLOSS (F-21.03). DO NOT APPLY PRIMER AND ENAMEL TO AREA SHOWN

- 1 NO PRIMER OR ENAMEL ON THIS SURFACE
- 2 CHAMFER EDGE OF HOLE 0.010 X 45°
0.015
- 3 BREAK EDGE OF BORE 0.005-0.010
- 4 USE BMS 5-95 SEALANT TO SEAL

MATERIAL: AL ALLOY

ALL DIMENSIONS ARE IN INCHES

141T6236-3
 Track Assembly - Repair
 Figure 601

52-11-84

REPAIR 2-1

Page 602

Jul 10/87

01



TRACK ASSEMBLY – REPAIR 3-1

141T6237-5

NOTE: Refer to REPAIR-GENERAL for applicable Standard Practices. If only the repair of the part's initial finish is necessary, refer to the Refinish instruction, Fig. 601.

1. Bushing Replacement (IPL Fig. 1, Fig. 601)

- A. Remove the bushings (295, 300).
- B. Install the new bushings. Use the procedures given in 20-50-03, but do not use primer. Use wet BMS 5-95 sealant.
- C. Machine the bushings to the dimensions shown.
- D. Seal the bushings with BMS 5-95 sealant.

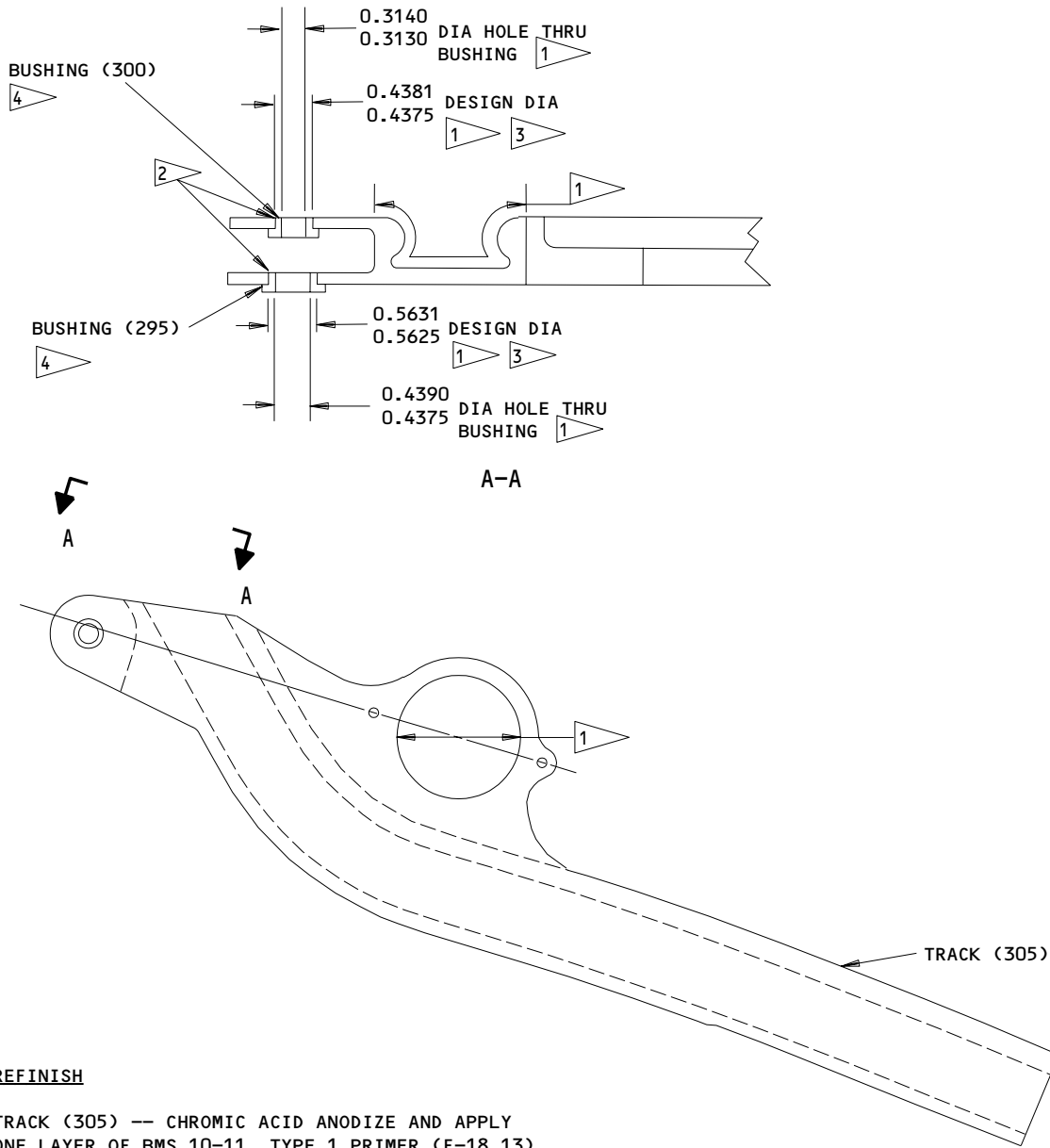
52-11-84

REPAIR 3-1

01

Page 601

Jul 10/87



REFINISH

TRACK (305) -- CHROMIC ACID ANODIZE AND APPLY ONE LAYER OF BMS 10-11, TYPE 1 PRIMER (F-18.13). APPLY ONE LAYER OF BMS 10-11, TYPE II ENAMEL, BAC702 WHITE GLOSS (F-21.03). DO NOT APPLY PRIMER AND ENAMEL TO AREA SHOWN

- 1 ▷ NO PRIMER OR ENAMEL ON THIS SURFACE
- 2 ▷ CHAMFER EDGE OF HOLE 0.010 x 45°
0.015
- 3 ▷ BREAK EDGE OF BORE 0.005-0.010
- 4 ▷ USE BMS 5-95 SEALANT TO SEAL

MATERIAL: AL ALLOY

ALL DIMENSIONS ARE IN INCHES

141T6237-5
 Track Assembly - Repair
 Figure 601

52-11-84

REPAIR 3-1

Page 602

Jul 10/87

01

TRACK ASSEMBLY – REPAIR 4-1

143T6105-5, -6

NOTE: Refer to REPAIR-GENERAL for applicable Standard Practices.

1. Track Replacement (IPL Fig. 1)

- A. Drill out items (5, 10, 145, 150, 160, 165, 170, 175, 185, 190) to remove the defective track (355, 360, 365, 370).
- B. Install the new track. Use the holes in the defective track as aids. Keep 6.64–6.68 inches between the tracks along the full length of the tracks (Fig. 601). Install the tracks against the track assembly (275, 290) as shown (Fig. 601).
 - (1) Drill 0.187–0.190 inch holes for bolts (5, 145, 185).
 - (2) Drill 0.309–0.313 inch holes for bolts (160, 165, 170).
- C. Attach the stringers (15), the stabilizer (155), and the splice assembly (180) to the new track. Use items (5, 10, 145, 150, 160, 165, 170, 175, 185, 190).
- D. Machine the surfaces for the rollers as necessary (Fig. 601).

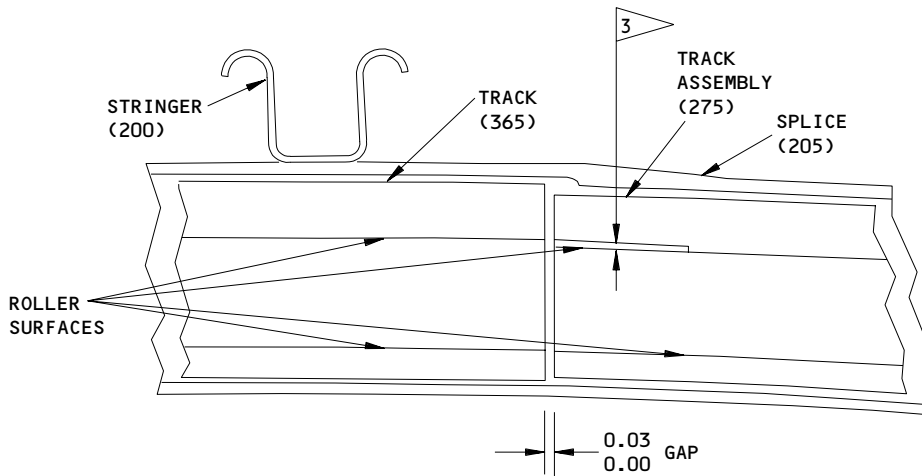
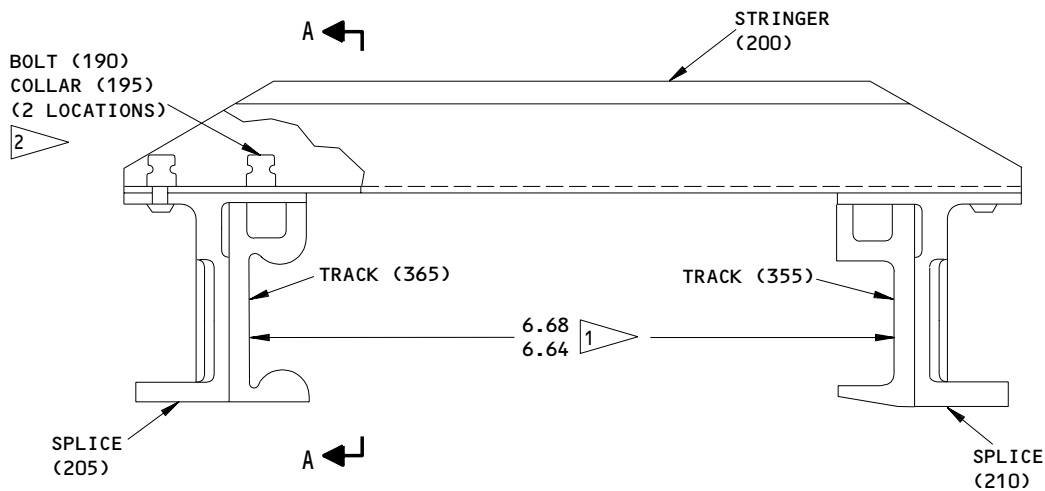
52-11-84

REPAIR 4-1

01.1

Page 601

Jul 01/05



(THIS DETAIL IS TYPICAL FOR BOTH FWD AND AFT TRACKS)
 A-A

- 1 KEEP THIS DISTANCE BETWEEN THE TRACKS ALONG THE FULL LENGTH OF THE TRACK ASSEMBLY.
- 2 INSTALL THESE FASTENERS BEFORE THE TRACKS ARE INSTALLED. MAKE SURE THE TOPS OF THE BOLT HEADS MAKE A CONTINUOUS SURFACE WITH (OR A RECESS IN) THE STRINGER. THE DEPTH OF THE RECESS CAN BE 0.01 INCH MAXIMUM.

- 3 IF THE ROLLER SURFACES ARE NOT ALIGNED, DIVIDE THE QUANTITY THAT THEY ARE NOT ALIGNED EQUALLY BETWEEN THE TWO SURFACES. IF THE TOTAL QUANTITY IS MORE THAN 0.01 INCH, MACHINE THE SURFACES SMOOTH ALONG A DISTANCE OF 0.25 INCH MINIMUM. MAKE SURE THE MACHINED SURFACES HAVE A FINISH OF 125 AA OR BETTER.

ALL DIMENSIONS ARE IN INCHES

Track Replacement
 Figure 601

52-11-84

REPAIR 4-1

01.1

Page 602

Jul 01/05

LINK ASSEMBLY - REPAIR 5-1

143T6123-1

NOTE: Refer to REPAIR-GENERAL for applicable Standard Practices. If only the repair of the part's initial finish is necessary, refer to the Refinish instruction.

1. Bearing Replacement (IPL Fig. 1)

- A. Remove the bearing (135).
- B. Install and roller swage the new bearing. Use the procedures given in 20-50-03.

2. Refinish

- A. Link (140) -- Chromic acid anodize (F-17.04). Apply one layer of BMS 10-11, type I primer (F-20.02). Do not apply primer to the bore for the bearing. Material: Al alloy.

52-11-84

REPAIR 5-1

01

Page 601

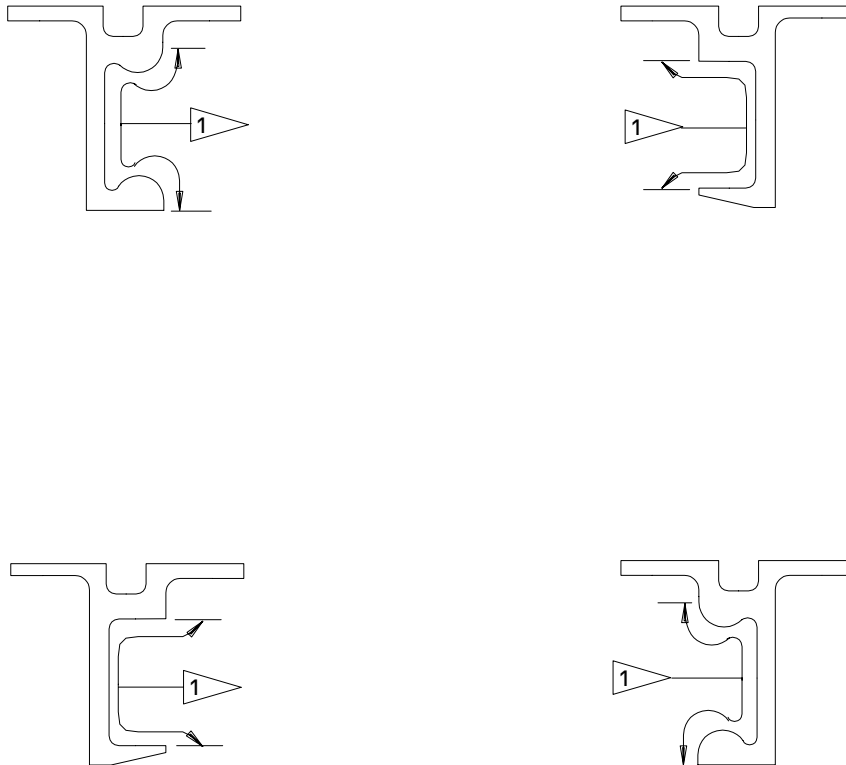
Jul 10/87

TRACK - REPAIR 6-1

143T6124-1, -2, -3, -4

1. Repair

NOTE: This repair gives instructions for the repair of the initial finish. Refer to the Refinish instruction in Fig. 601 and to REPAIR-GENERAL for applicable Standard Practices.



REFINISH

CHROMIC ACID ANODIZE (F-17.04). APPLY ONE LAYER OF BMS 10-11, TYPE 1 PRIMER (F-20.02). DO NOT APPLY PRIMER TO AREA SHOWN.

MATERIAL: AL ALLOY

1 DO NOT APPLY PRIMER TO THESE SURFACES FOR THE FULL LENGTH OF THE TRACK

143T6124
Track - Repair
Figure 601

52-11-84

REPAIR 6-1

01

Page 601

Jul 10/87

LINK ASSEMBLY - REPAIR 7-1

143T6126-1

NOTE: Refer to REPAIR-GENERAL for applicable Standard Practices. If only the repair of the part's initial finish is necessary, refer to the Refinish instruction.

1. Bushing Replacement (IPL Fig. 1)

- A. Remove the bushings (100, 105, 110).
- B. Install the new bushings. Use the procedures given in 20-50-03.

2. Refinish

- A. Link (115) -- Chromic acid anodize. Apply one layer of BMS 10-11, type I primer (F-18.13). Apply one layer of BMS 10-11, type II enamel, BAC702 white gloss (F-21.03). Do not apply primer or enamel to the bores for the bushings. Material: Al alloy.

52-11-84

REPAIR 7-1

01

Page 601

Jul 10/87

REFINISH OF OTHER PARTS – REPAIR 8-1

1. Instructions given in Fig. 601 are to repair the finishes of the items.

| IPL FIG. & ITEM | MATERIAL | FINISH |
|--|----------|---|
| <u>Fig. 1</u> Stringer (15,200), bracket (50), retainer (265) | Al alloy | Chemically treat. Apply one layer of BMS 10-11, type I primer (F-18.06). |
| Stabilizer (155), splice (205,210), filler (225,240), clip (230,235, 340,345), support (245), angle (350) | Al alloy | Chromic acid anodize. Apply one layer of BMS 10-11, type I primer (F-18-13). |
| Angle (248A) | Al alloy | Chemically treat. Apply one layer of BMS 10-11, type I primer (F-18.06). Apply one layer of BMS 10-11, type II enamel, BAC702 white gloss (F-21.03). Do not apply enamel on the area that has serrations. |

Refinish Details
 Figure 601

52-11-84

REPAIR 8-1

01.1

Page 601

Jul 01/05

ASSEMBLY1. Materials

A. Adhesive -- Type 70 (Ref 20-50-12)

2. Assembly (IPL Fig. 1)

A. Install the cam latch (310, 315).

B. Install the bearings (270).

C. Install the bearing retainers (265) and items (250 thru 260).

D. Install the link assembly (95) and items (70 thru 80).

E. Install the links (90) and items (70 thru 80).

| F. Bond the rub strip (353) to the cable guard (60A). Use Type 70 adhesive.

| G. Install the angle (53A), the bracket assembly (20A), and items (25 thru 35).

3. Store this component using Standard Practices and the instructions contained in 20-44-02.

52-11-84ASSEMBLY
Page 701
Jul 01/05

01.1

ILLUSTRATED PARTS LIST

1. This section lists and illustrates replaceable or repairable component parts. The Illustrated Parts Catalog contains a complete explanation of the Boeing part numbering system.

2. Indentures show parts relationships as follows:

Assembly

Detail Parts for Assembly

Subassembly

Attaching Parts for Subassembly

Detail Parts for Subassembly

Detail Installation Parts (Included only if installation parts may be returned to shop as part of assembly)

3. One use code letter (A, B, C, etc.) is assigned in the EFF CODE column for each variation of top assembly. All listed parts are used on all top assemblies except when limitations are shown by use code letter opposite individual part entries.

4. Letter suffixes (alpha-variants) are added to item numbers for optional parts, Service Bulletin modification parts, configuration differences (Except left- and right-hand parts), product improvement parts, and parts added between two sequential item numbers. The alpha-variant is not shown on illustrations when appearance and location of all variants of the part is the same.

5. Service Bulletin modifications are shown by the notations PRE SB XXXX and POST SB XXXX.

A. When a new top assembly part number is assigned by Service Bulletin, the notations appear at the top assembly level only. The configuration differences at detail part level are then shown by use code letter.

B. When the top assembly part number is not changed by the Service Bulletin, the notations appear at the detail part level.

6. Parts Interchangeability

Optional
(OPT)

The parts are optional to and interchangeable with other parts having the same item number.

Supersedes, Superseded By
(SUPSDS, SUPSD BY)

The part supersedes and is not interchangeable with the original part.

Replaces, Replaced By
(REPLS, REPLD BY)

The part replaces and is interchangeable with, or is an alternate to, the original part.

52-11-84

ILLUSTRATED PARTS LIST

01

Page 1001

Jul 10/87

VENDORS

S0352 NIPPON MINIATURE BEARING CO LTD
TOKYO, JAPAN

OPTK6 SPS TECHNOLOGIES INC AEROSPACE PRODUCTS DIV
5195 W 4700
SALT LAKE CITY, UTAH 94118
SEE V56878 SPS TECHNOLOGIES INC

06725 AIR INDUSTRIES CORPORATION
12570 KNOTT STREET
GARDEN GROVE, CALIFORNIA 92641-3932
FORMERLY AIR INDUSTRIES OF CALIF IN GARDENA, CALIF.

06950 SCREWCORP VSI AEROSPACE PRODUCTS DIV FAIRCHILD IND DIV
13001 EAST TEMPLE AVENUE PO BOX 730
CITY OF INDUSTRY, CALIFORNIA 91746-1417
FORMERLY VB0096 AND VSI CORP SCREWCORP DIV
FORMERLY IN CULVER CITY, CALIFORNIA

08524 DEUTSCH FASTENER CORP SEE CODE V97928

11815 CHERRY AEROSPACE FASTENERS DIV OF TEXTRON
1224 EAST WARNER AVENUE PO BOX 2157
SANTA ANA, CALIFORNIA 92707-0157
FORMERLY IN LOS ANGELES, CALIF , FORMERLY CHERRY FASTENERS
TOWNSEND DIV OF TEXTRON INC V71087

15653 ALOCA GLOBAL FASTEMERS INC DIV KAYNARE PRODUCTS
800 S STATE COLLEGE BLVD
FULLERTON, CALIFORNIA 92831-3001
FORMERLY VK6405 MICRODOT AEROSP LTD; FORMERLY KAYNAR TECH
FORMERLY FAIRCHILD FASTENERS KAYNAR DIV

17446 HUCK INTL INC AEROSPACE FASTENER DIV
900 WATSON CENTER ROAD
CARSON, CALIFORNIA 90745-4201
FORMERLY V32134 REXNORD INC; FORMERLY V97928 HUCK INTL

5M902 ALCOA GLOBAL FASTENERS INC, DIV OF VOI-SHAN PRODUCTS
3000 W LOMITA BLVD
TORRANCE, CALIFORNIA 90505-5103
FORMERLY FAIRCHILD INC INC FAIRCHILD AEROSPACE FASTENERS DIV

52828 REPUBLIC FASTENER MFG CORP
1300 RANCHO CONEJO BLVD
NEWBURY PARK, CALIFORNIA 91320-1405
FORMERLY IN SYLMAR, CALIFORNIA

52-11-84

ILLUSTRATED PARTS LIST
01.1 Page 1002
Jul 01/05

VENDORS

56644 AURORA BEARING CO
 970 SOUTH LAKE STREET
 AURORA, ILLINOIS 60506-5929

56878 SPS TECHNOLOGIES INC AEROSPACE AND INDUSTRIAL PRODUCTS DIV
 301 HIGHLAND AVE
 JENKINTOWN, PENNSYLVANIA 19046
 FORMERLY STANDARD PRESSED STEEL

60516 WEST COAST AEROSPACE INC
 812 MIRAFLORES STREET
 SAN PEDRO, CALIFORNIA 90731-1439

72962 HARVARD INDUSTRIES INC
 3 WERNER WAY SUITE 210
 LEBANON, NEW JERSEY 08833
 FORMERLY ESNA V7A079
 FORMERLY ELASTIC STOP NUT IN UNION, NJ

73197 HI-SHEAR TECHNOLOGY CORP
 2600 SKYPARK DRIVE
 TORRANCE, CALIFORNIA 90509

80539 SPS TECHNOLOGIES INC DIV AERPSOACE - SANTA ANA
 2701 SOUTH HARBOR BOULEVARD
 SANTA ANA, CALIFORNIA 92704-5803
 FORMERLY NUTT-SHEL DIV OF SPC WESTERN CO V80539
 AND STANDARD PRESSED STEEL WESTERN DIV V17279

92215 FAIRCHILD IND INC FAIRCHILD AEROSPACE FASTENER DIV
 3010 W LOMITA BLVD
 TORRANCE, CALIFORNIA 90505-5102
 FORMERLY VOI-SHAN IN CULVER CITY, CALIF

97928 SEE V17446 HUCK INTL
 HUCK INTL SEE V17446 HUCK INTL
 SEE V17446 HUCK INTL

52-11-84

 ILLUSTRATED PARTS LIST
 01.1 Page 1003
 Jul 01/05

| PART NUMBER | AIRLINE PART NO. | FIG. | ITEM | TTL REQ |
|-----------------|---------------------|------|------|------------|
| AN960C416L | | 1 | 75A | 4 |
| AN960KD10L | | 1 | 30 | 2 |
| | | 1 | 255 | 4 |
| BACB10ES04GC | | 1 | 135 | 2 |
| BACB28AK04-031 | | 1 | 85 | 1 |
| BACB28AM07B013A | | 1 | 280 | 2 |
| | | 1 | 295 | 1 |
| BACB28AP05P013 | | 1 | 300 | 1 |
| BACB28AR06A025A | | 1 | 100 | 2 |
| BACB28X4C12 | | 1 | 105 | 1 |
| BACB28X6M12 | | 1 | 110 | 1 |
| BACB30MY6K4 | | 1 | 330 | 4 |
| BACB30NR4K11 | | 1 | 65 | 1 |
| BACB30NR4K18 | | 1 | 70 | 1 |
| BACB30NR4K5 | | 1 | 218 | 2 |
| BACB30NR4K7 | | 1 | 217 | 2 |
| BACB30NT3K8 | | 1 | 250 | 4 |
| BACB30NW6K8 | | 1 | 125 | 6 |
| BACB30NX6K3 | | 1 | 5 | 24 |
| | | 1 | 185 | 2 |
| BACB30NX6K4 | | 1 | 145 | 4 |
| BACB30NY10K6 | | 1 | 160 | 4 |
| BACB30NY10K7 | | 1 | 165 | 8 |
| BACB30NY10K9 | | 1 | 170 | 4 |
| | | 1 | 215 | 2 |
| BACB30NY5K5 | | 1 | 320 | 4 |
| BACB30NY6K3 | | 1 | 190 | 2 |
| BACC30M6 | | 1 | 130 | 6 |
| | | 1 | 335 | 4 |
| BACC30X10 | | 1 | 175 | 16 |
| | | 1 | 220 | 2 |
| BACC30X5 | | 1 | 325 | 4 |
| BACC30X6 | | 1 | 10 | 24 |
| | | 1 | 150 | 4 |
| | | 1 | 195 | 4 |
| BACN10JC4CD | | 1 | 80 | 2 |
| BACN10TL3A3 | | 1 | 45 | 2 |
| BACR15BA3AD | | 1 | 55 | 6 |
| BACR15BA6AD | | 1 | 247 | 2 |
| BACR15BB4AD | | 1 | 40 | 4 |
| BRH10C4D | | 1 | 80 | 2 |
| B30NW6K8 | | 1 | 125 | 6 |
| HL1012AZ6-3 | | 1 | 5 | 24 |
| | | 1 | 185 | 2 |
| HL1012AZ6-4 | | 1 | 145 | 4 |
| HL11VAZ6-8 | | 1 | 125 | 6 |

52-11-84

 ILLUSTRATED PARTS LIST
 01.1 Page 1004
 Jul 01/05


BOEING
 COMPONENT
 MAINTENANCE MANUAL

| PART NUMBER | AIRLINE PART NO. | FIG. | ITEM | TTL REQ |
|-------------|---------------------|------|------|------------|
| HL1187-10 | | 1 | 175 | 16 |
| | | 1 | 220 | 2 |
| HL1187-5 | | 1 | 325 | 4 |
| HL1187-6 | | 1 | 10 | 24 |
| | | 1 | 150 | 4 |
| | | 1 | 195 | 4 |
| HL12VAZ6-3 | | 1 | 5 | 24 |
| | | 1 | 185 | 2 |
| HL12VAZ6-4 | | 1 | 145 | 4 |
| HL13VAZ10-6 | | 1 | 160 | 4 |
| HL13VAZ10-7 | | 1 | 165 | 8 |
| HL13VAZ10-9 | | 1 | 170 | 4 |
| | | 1 | 215 | 2 |
| HL13VAZ5-5 | | 1 | 320 | 4 |
| HL13VAZ6-3 | | 1 | 190 | 2 |
| HL13V3 | | 1 | 190 | 2 |
| HL13V5 | | 1 | 320 | 4 |
| HL13V6 | | 1 | 160 | 4 |
| HL13V7 | | 1 | 165 | 8 |
| HL13V9 | | 1 | 170 | 4 |
| | | 1 | 215 | 2 |
| HL79-6 | | 1 | 130 | 6 |
| | | 1 | 335 | 4 |
| HL86PB5 | | 1 | 325 | 4 |
| HL87-10 | | 1 | 175 | 16 |
| | | 1 | 220 | 2 |
| HL87-5 | | 1 | 325 | 4 |
| HL87-6 | | 1 | 10 | 24 |
| | | 1 | 150 | 4 |
| | | 1 | 195 | 4 |
| HTES04VC | | 1 | 135 | 2 |
| H51650-4BAC | | 1 | 80 | 2 |
| L801-10K6 | | 1 | 160 | 4 |
| L801-10K7 | | 1 | 165 | 8 |
| L801-10K9 | | 1 | 170 | 4 |
| | | 1 | 215 | 2 |
| L801-5K5 | | 1 | 320 | 4 |
| L801-6K3 | | 1 | 190 | 2 |
| L802-6K3 | | 1 | 5 | 24 |
| | | 1 | 185 | 2 |
| L802-6K4 | | 1 | 145 | 4 |
| L803-6K8 | | 1 | 125 | 6 |
| MS21042L3 | | 1 | 35 | 2 |
| | | 1 | 260 | 4 |
| MS21042L4 | | 1 | 227 | 4 |
| MS27648-23G | | 1 | 270 | 2 |

52-11-84

ILLUSTRATED PARTS LIST

01.1

Page 1005

Jul 01/05

| PART NUMBER | AIRLINE PART NO. | FIG. | ITEM | TTL REQ |
|----------------|---------------------|------|------|------------|
| NAS514P1032-10 | | 1 | 25 | 2 |
| NC04TG5C | | 1 | 135 | 2 |
| NS202486-048 | | 1 | 80 | 2 |
| T6C428JCD | | 1 | 80 | 2 |
| 102LH9075-4W | | 1 | 80 | 2 |
| 141T6180-8 | | 1 | 315 | 1 |
| 141T6180-9 | | 1 | 310 | 1 |
| 141T6236-3 | | 1 | 275 | 1 |
| 141T6236-5 | | 1 | 285 | 1 |
| 141T6237-4 | | 1 | 305 | 1 |
| 141T6237-5 | | 1 | 290 | 1 |
| 141T6238-5 | | 1 | 205 | 1 |
| 141T6238-6 | | 1 | 210 | 1 |
| 141T6345-1 | | 1 | 205A | 1 |
| 141T6345-2 | | 1 | 210A | 1 |
| 143T6105-13 | | 1 | 1A | RF |
| 143T6105-14 | | 1 | 3A | RF |
| 143T6105-5 | | 1 | 1 | RF |
| 143T6105-6 | | 1 | 3 | RF |
| 143T6105-62 | | 1 | 155 | 1 |
| 143T6105-67 | | 1 | 230 | 1 |
| 143T6105-7 | | 1 | 180 | 1 |
| 143T6105-73 | | 1 | 60A | 2 |
| | | 1 | 62 | 1 |
| 143T6105-9 | | 1 | 353 | 4 |
| 143T6123-1 | | 1 | 120 | 2 |
| 143T6123-2 | | 1 | 140 | 2 |
| 143T6124-1 | | 1 | 355 | 1 |
| 143T6124-2 | | 1 | 365 | 1 |
| 143T6124-3 | | 1 | 360 | 1 |
| 143T6124-4 | | 1 | 370 | 1 |
| 143T6126-1 | | 1 | 95 | 1 |
| 143T6126-2 | | 1 | 115 | 1 |
| 143T6127-1 | | 1 | 90 | 2 |
| 146T6105-74 | | 1 | 225A | 2 |
| 146T6107-17 | | 1 | 200 | 1 |
| 146T6107-19 | | 1 | 15 | 6 |
| 146T6107-21 | | 1 | 340 | 1 |
| 146T6107-22 | | 1 | 345 | 1 |
| 146T6107-23 | | 1 | 350 | 1 |
| 146T6107-25 | | 1 | 245 | 1 |
| 146T6107-28 | | 1 | 235 | 1 |
| 146T6107-41 | | 1 | 225 | 2 |
| 146T6107-43 | | 1 | 240 | 1 |
| 146T6107-63 | | 1 | 265 | 2 |

52-11-84

 ILLUSTRATED PARTS LIST
 01.1 Page 1006
 Jul 01/05


BOEING
 COMPONENT
 MAINTENANCE MANUAL

| PART NUMBER | AIRLINE PART NO. | FIG. | ITEM | TTL REQ |
|-------------|---------------------|------|------|------------|
| 284T0867-1 | | 1 | 248A | 1 |
| 284T0867-6 | | 1 | 53A | 1 |
| 287T4342-2 | | 1 | 50 | 1 |
| 287T4342-5 | | 1 | 20A | 1 |
| 66014-6 | | 1 | 130 | 6 |
| | | 1 | 335 | 4 |

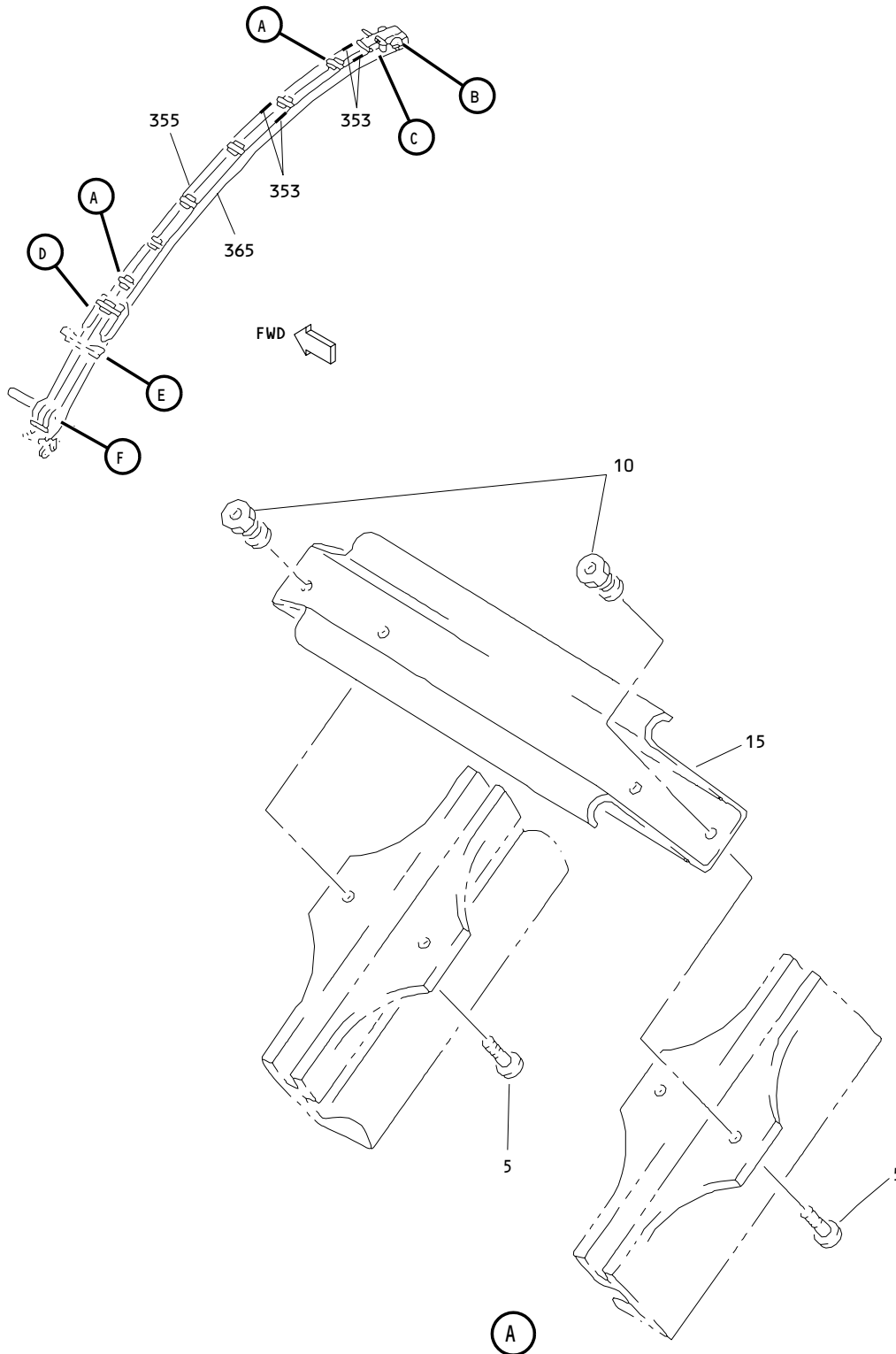
52-11-84

ILLUSTRATED PARTS LIST

01.1

Page 1007

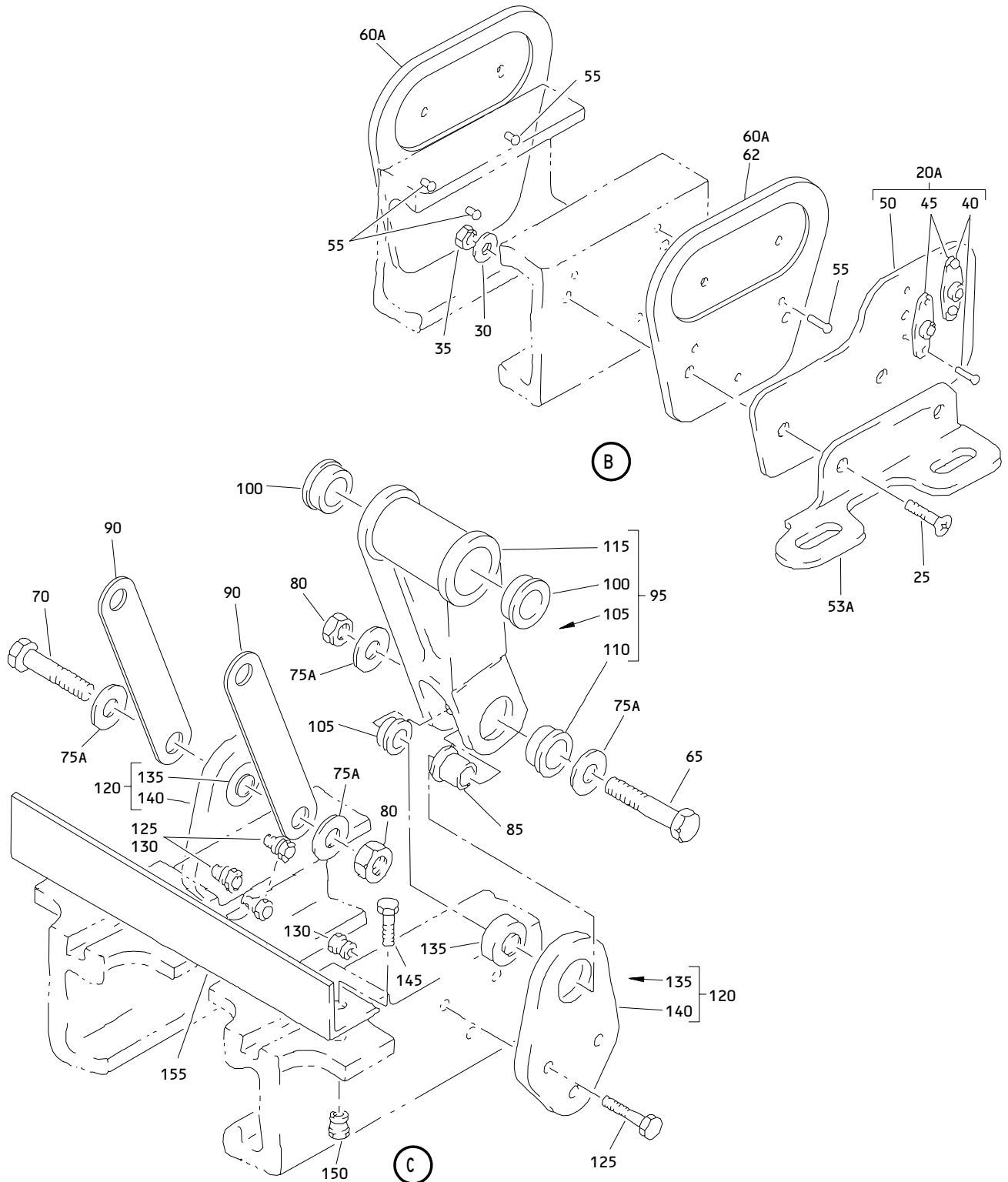
Jul 01/05



**Mid Entry Door Track Assembly
 Figure 1 (Sheet 1)**

52-11-84

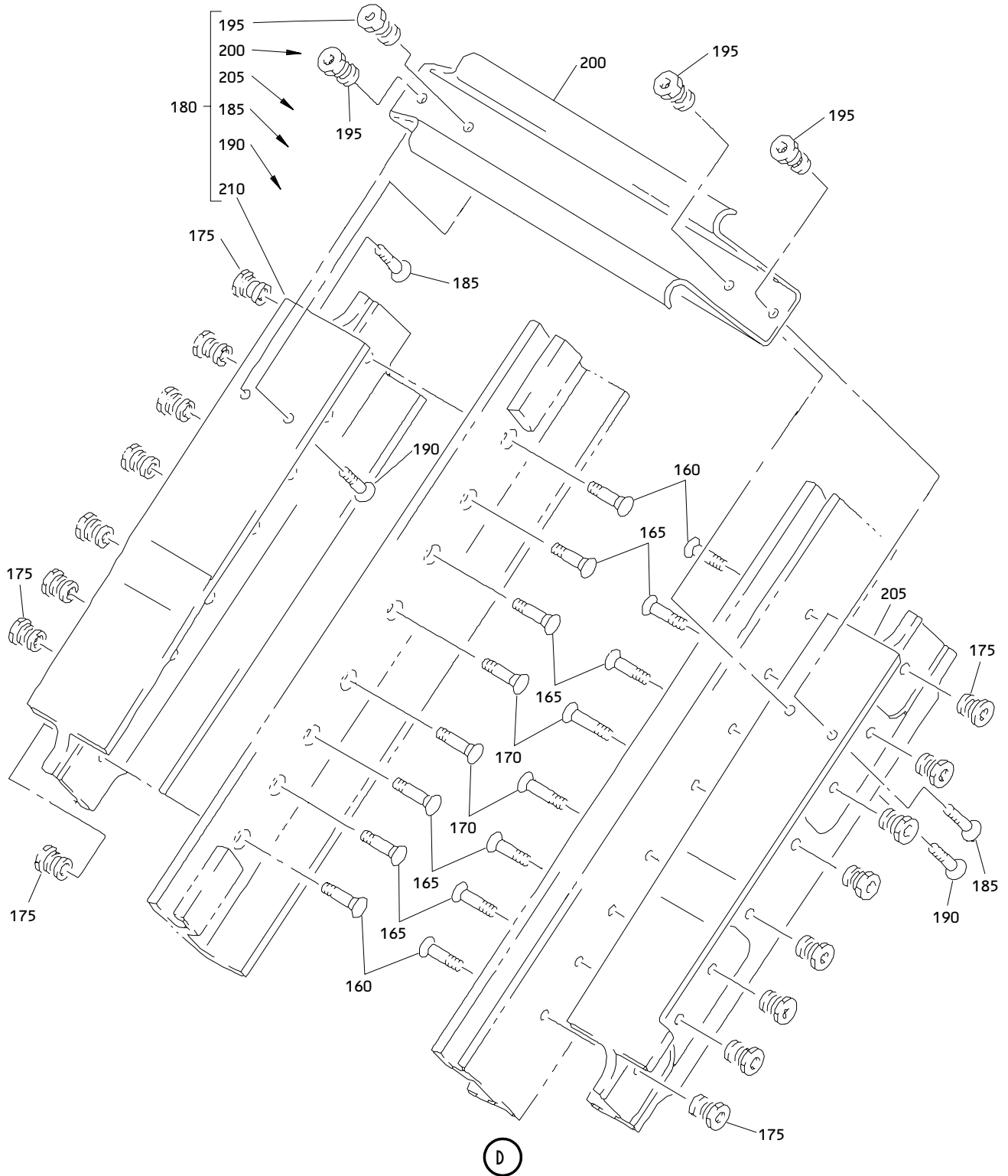
**ILLUSTRATED PARTS LIST
 01.1 Page 1008
 Jul 01/05**



Mid Entry Door Track Assembly
 Figure 1 (Sheet 2)

52-11-84

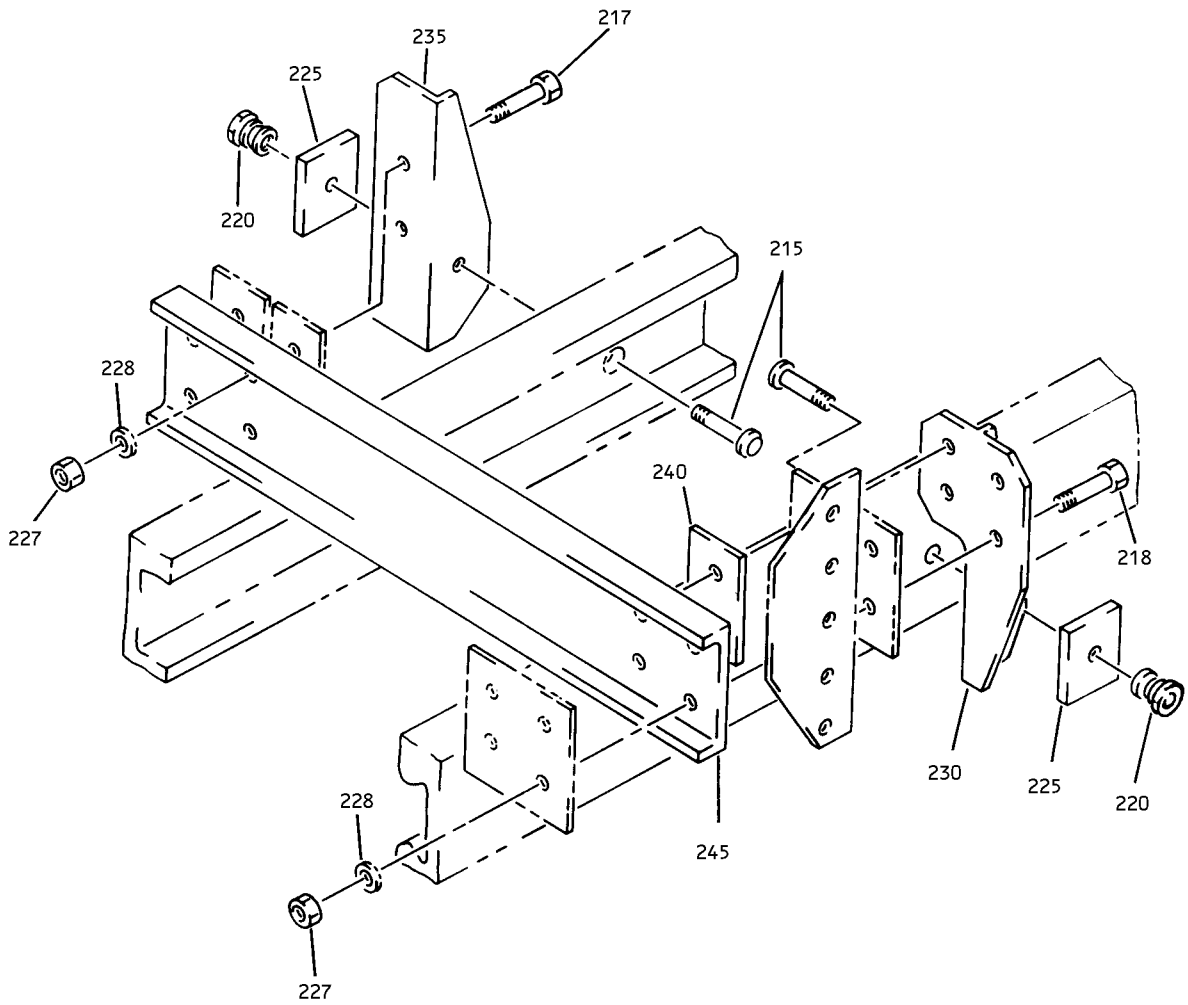
ILLUSTRATED PARTS LIST
 01.1 Page 1009
 Jul 01/05



**Mid Entry Door Track Assembly
 Figure 1 (Sheet 3)**

52-11-84

**ILLUSTRATED PARTS LIST
 01.1 Page 1010
 Jul 01/05**

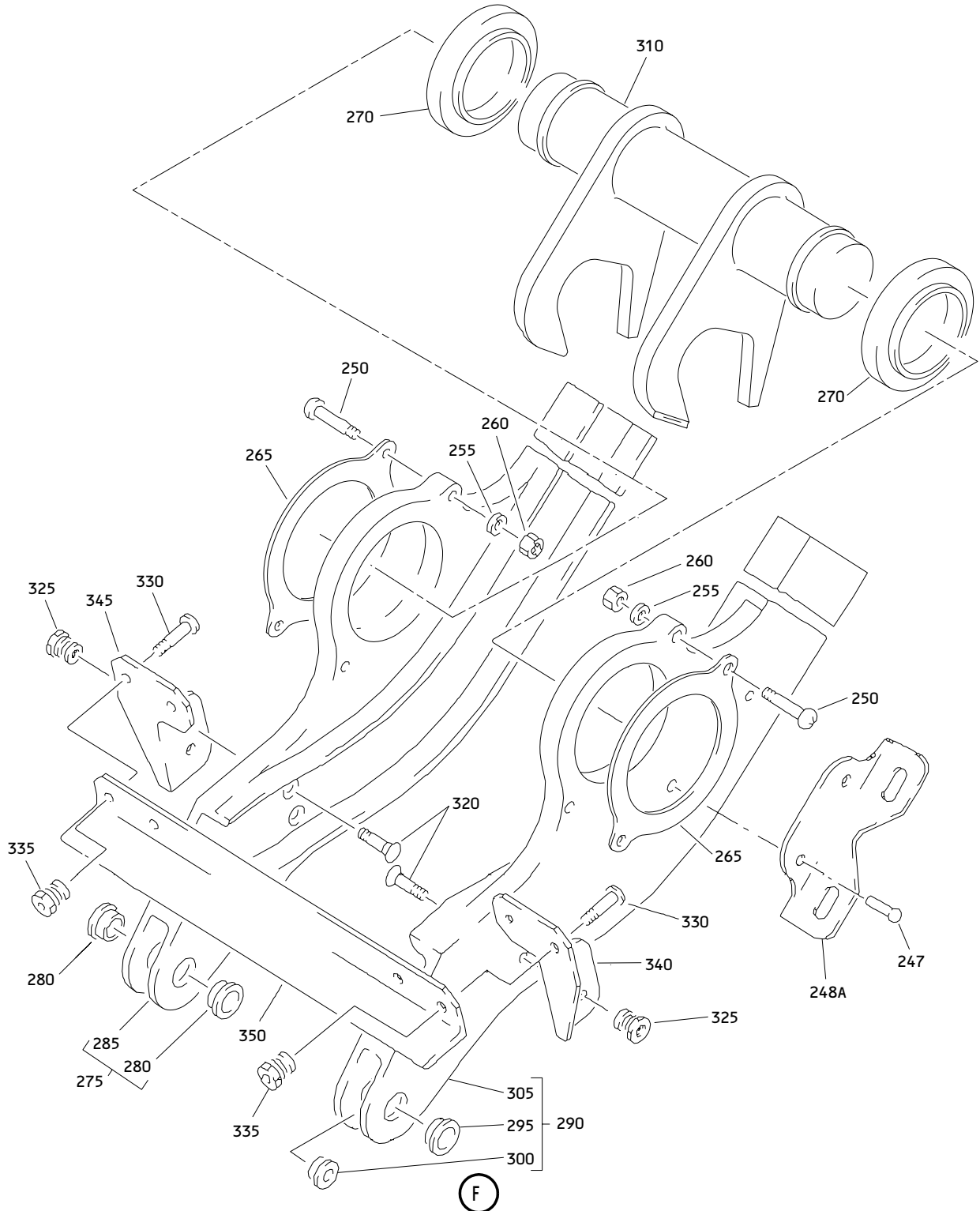


(E)

Mid Entry Door Track Assembly
Figure 1 (Sheet 4)

52-11-84

ILLUSTRATED PARTS LIST
01.1 Page 1011
Jul 01/05



**Mid Entry Door Track Assembly
 Figure 1 (Sheet 5)**

52-11-84

**ILLUSTRATED PARTS LIST
 01.1 Page 1012
 Jul 01/05**


BOEING
 COMPONENT
 MAINTENANCE MANUAL

| FIG. & ITEM | PART NO. | AIRLINE PART NUMBER | NOMENCLATURE 1234567 | EFF CODE | QTY PER ASSY |
|-------------|-------------|---------------------|---|----------|--------------|
| 01- | | | | | |
| R -1 | 143T6105-5 | | TRACK ASSY-MID ENTRY DOOR | A | RF |
| -1A | 143T6105-13 | | TRACK ASSY-MID ENTRY DOOR | C | RF |
| -3 | 143T6105-6 | | TRACK ASSY-MID ENTRY DOOR | B | RF |
| R -3A | 143T6105-14 | | TRACK ASSY-MID ENTRY DOOR | D | RF |
| 5 | HL1012AZ6-3 | | .BOLT- (V97928) (SPEC BACB30NX6K3) (OPT HL12VAZ6-3 (V73197)) (OPT HL12VAZ6-3 (V92215)) (OPT HL12VAZ6-3 (V97928)) (OPT L802-6K3 (V06725)) (OPT HL12VAZ6-3 (V56878)) (OPT HL1012AZ6-3 (V0PTK6)) (OPT HL1012AZ6-3 (V06725)) (OPT HL1012AZ6-3 (V06950)) (OPT HL1012AZ6-3 (V17446)) (OPT HL1012AZ6-3 (V56878)) (OPT HL1012AZ6-3 (V60516)) (OPT HL1012AZ6-3 (V73197)) | | 24 |

52-11-84

ILLUSTRATED PARTS LIST

01.1

Page 1013

Jul 01/05

| FIG. & ITEM | PART NO. | AIRLINE PART NUMBER | NOMENCLATURE 1234567 | EFF CODE | QTY PER ASSY |
|-------------|----------------|---------------------|---|----------|--------------|
| 01-10 | HL1187-6 | | .COLLAR- (V5M902) (SPEC BACC30X6) (OPT HL87-6 (V73197)) (OPT HL87-6 (V92215)) (OPT HL1187-6 (V56878)) (OPT HL1187-6 (V92215)) (OPT HL87-6 (V56878)) (OPT HL1187-6 (V73197)) | | 24 |
| 15 | 146T6107-19 | | .STRINGER | | 6 |
| 20 | 287T4342-1 | | DELETED | | |
| R 20A | 287T4342-5 | | .BRACKET ASSY-UPR WIRE PROVISIONS ATTACHING PARTS | A,C | 1 |
| 25 | NAS514P1032-10 | | .SCREW | A,C | 2 |
| 30 | AN960KD10L | | .WASHER | A,C | 2 |
| 35 | MS21042L3 | | .NUT | A,C | 2 |
| 40 | BACR15BB4AD | | -----*----- ..RIVET- (SIZE DETERMINE ON INST) | A,C | 4 |
| 45 | BACN10TL3A3 | | ..NUTPLATE | A,C | 2 |
| 50 | 287T4342-2 | | ..BRACKET | A,C | 1 |
| 53 | 284T0867-4 | | DELETED | | |
| R 53A | 284T0867-6 | | ..ANGLE | A,C | 1 |
| 55 | BACR15BA3AD | | .RIVET- (SIZE DETERMINE ON INST) | | 6 |

52-11-84

 ILLUSTRATED PARTS LIST
 01.1 Page 1014
 Jul 01/05


BOEING
 COMPONENT
 MAINTENANCE MANUAL

| FIG. & ITEM | PART NO. | AIRLINE PART NUMBER | NOMENCLATURE 1234567 | EFF CODE | QTY PER ASSY |
|-------------|-----------------|---------------------|---------------------------|----------|--------------|
| 01- | | | DELETED | | |
| R 60 | 143T6105-63 | | .GUARD-CABLE | A,C | 2 |
| R 62 | 143T6105-73 | | .GUARD-CABLE | B,D | 1 |
| 65 | BACB30NR4K11 | | .BOLT | | 1 |
| 70 | BACB30NR4K18 | | .BOLT | | 1 |
| 75 | AN960KD416L | | DELETED | | |
| R 75A | AN960C416L | | .WASHER | | 4 |
| 80 | BRH10C4D | | .NUT- | | 2 |
| | | | (V52828) | | |
| | | | (SPEC BACN10JC4CD) | | |
| | | | (OPT T6C428JCD | | |
| | | | (V11815)) | | |
| | | | (OPT NS202486-048 | | |
| | | | (V80539)) | | |
| | | | (OPT 102LH9075-4W | | |
| | | | (V72962)) | | |
| | | | (OPT H51650-4BAC | | |
| | | | (V15653)) | | |
| 85 | BACB28AK04-031 | | .BUSHING | | 1 |
| 90 | 143T6127-1 | | .LINK-UPR TRACK SPRT | | 2 |
| 95 | 143T6126-1 | | .LINK ASSY-UPR TRACK SPRT | | 1 |
| 100 | BACB28AR06A025A | | ..BUSHING | | 2 |
| 105 | BACB28X4C12 | | ..BUSHING | | 1 |
| 110 | BACB28X6M12 | | ..BUSHING | | 1 |
| 115 | 143T6126-2 | | ..LINK | | 1 |
| 120 | 143T6123-1 | | .LINK ASSY-UPR TRACK SPRT | | 2 |
| | | | ATTACHING PARTS | | |
| 125 | HL11VAZ6-8 | | .BOLT- | | 6 |
| | | | (V60516) | | |
| | | | (SPEC BACB30NW6K8) | | |
| | | | (OPT B30NW6K8 | | |
| | | | (V97928)) | | |
| | | | (OPT HL11VAZ6-8 | | |
| | | | (V73197)) | | |
| | | | (OPT HL11VAZ6-8 | | |
| | | | (V92215)) | | |
| | | | (OPT HL11VAZ6-8 | | |
| | | | (V97928)) | | |
| | | | (OPT L803-6K8 | | |
| | | | (V06725)) | | |
| | | | (OPT HL11VAZ6-8 | | |
| | | | (VOPTK6)) | | |
| | | | (OPT HL11VAZ6-8 | | |
| | | | (V56878)) | | |

52-11-84

ILLUSTRATED PARTS LIST

01.1

Page 1015

Jul 01/05

| FIG. & ITEM | PART NO. | AIRLINE PART NUMBER | NOMENCLATURE 1234567 | EFF CODE | QTY PER ASSY |
|-------------|-------------|---------------------|--|----------|--------------|
| 01-130 | HL79-6 | | . COLLAR- (V5M902) (SPEC BACC30M6) (OPT HL79-6 (V73197)) (OPT HL79-6 (V92215)) (OPT 66014-6 (V56878)) (OPT HL79-6 (V56878)) -----*----- | | 6 |
| 135 | HTES04VC | | .. BEARING- (VS0352) (SPEC BACB10ES04GC) (OPT NCO4TG5C (V56644)) | | 1 |
| 140 | 143T6123-2 | | .. LINK | | 1 |
| 145 | HL1012AZ6-4 | | . BOLT- (V97928) (SPEC BACB30NX6K4) (OPT HL12VAZ6-4 (V73197)) (OPT HL12VAZ6-4 (V92215)) (OPT HL12VAZ6-4 (V97928)) (OPT L802-6K4 (V06725)) (OPT HL12VAZ6-4 (V56878)) (OPT HL1012AZ6-4 (V0PTK6)) (OPT HL1012AZ6-4 (V06725)) (OPT HL1012AZ6-4 (V06950)) (OPT HL1012AZ6-4 (V17446)) (OPT HL1012AZ6-4 (V56878)) (OPT HL1012AZ6-4 (V60516)) (OPT HL1012AZ6-4 (V73197)) | | 4 |

52-11-84

ILLUSTRATED PARTS LIST

01.1

Page 1016

Jul 01/05


BOEING
 COMPONENT
 MAINTENANCE MANUAL

| FIG. & ITEM | PART NO. | AIRLINE PART NUMBER | NOMENCLATURE 1234567 | EFF CODE | QTY PER ASSY |
|-------------|-------------|---------------------|---|----------|--------------|
| 01-150 | HL1187-6 | | .COLLAR- (V5M902) (SPEC BACC30X6) (OPT HL87-6 (V73197)) (OPT HL87-6 (V92215)) (OPT HL1187-6 (V56878)) (OPT HL1187-6 (V92215)) (OPT HL87-6 (V56878)) (OPT HL1187-6 (V73197)) | | 4 |
| 155 | 143T6105-62 | | .STABILIZER | | 1 |
| 160 | HL13VAZ10-6 | | .BOLT- (V56878) (SPEC BACB30NY10K6) (OPT HL13VAZ10-6 (V73197)) (OPT HL13VAZ10-6 (V92215)) (OPT HL13VAZ10-6 (V97928)) (OPT L801-10K6 (V06725)) (OPT HL13VAZ10-6 (V08524)) (OPT HL13V6 (V06725)) (OPT L801-10K6 (VOPTK6)) | | 4 |

52-11-84

 ILLUSTRATED PARTS LIST
 01.1 Page 1017
 Jul 01/05

| FIG. & ITEM | PART NO. | AIRLINE PART NUMBER | NOMENCLATURE 1234567 | EFF CODE | QTY PER ASSY |
|-------------|-------------|---------------------|---|----------|--------------|
| 01-165 | HL13VAZ10-7 | | .BOLT- (V56878) (SPEC BACB30NY10K7) (OPT HL13VAZ10-7 (V73197)) (OPT HL13VAZ10-7 (V92215)) (OPT HL13VAZ10-7 (V97928)) (OPT L801-10K7 (V06725)) (OPT HL13VAZ10-7 (V08524)) (OPT HL13V7 (V06725)) (OPT HL13VAZ10-7 (V0PTK6)) | | 8 |
| 170 | HL13VAZ10-9 | | .BOLT- (V56878) (SPEC BACB30NY10K9) (OPT HL13VAZ10-9 (V73197)) (OPT HL13VAZ10-9 (V92215)) (OPT HL13VAZ10-9 (V97928)) (OPT L801-10K9 (V06725)) (OPT HL13VAZ10-9 (V08524)) (OPT HL13V9 (V06725)) (OPT HL13VAZ10-9 (V17446)) | | 4 |

52-11-84

 ILLUSTRATED PARTS LIST
 01.1 Page 1018
 Jul 01/05


BOEING
 COMPONENT
 MAINTENANCE MANUAL

| FIG. & ITEM | PART NO. | AIRLINE PART NUMBER | NOMENCLATURE 1234567 | EFF CODE | QTY PER ASSY |
|-------------|-------------|---------------------|--|----------|--------------|
| 01-175 | HL1187-10 | | .COLLAR- (V5M902) (SPEC BACC30X10) (OPT HL87-10 (V73197)) (OPT HL87-10 (V92215)) (OPT HL1187-10 (V56878)) (OPT HL1187-10 (V92215)) (OPT HL87-10 (V56878)) (OPT HL1187-10 (V73197)) | | 16 |
| 180 | 143T6105-7 | | .SPLICE ASSY | | 1 |
| 185 | HL1012AZ6-3 | | ..BOLT- (V97928) (SPEC BACB30NX6K3) (OPT HL12VAZ6-3 (V73197)) (OPT HL12VAZ6-3 (V92215)) (OPT HL12VAZ6-3 (V97928)) (OPT L802-6K3 (V06725)) (OPT HL12VAZ6-3 (V56878)) (OPT HL1012AZ6-3 (V0PTK6)) (OPT HL1012AZ6-3 (V06725)) (OPT HL1012AZ6-3 (V06950)) (OPT HL1012AZ6-3 (V17446)) (OPT HL1012AZ6-3 (V56878)) (OPT HL1012AZ6-3 (V60516)) (OPT HL1012AZ6-3 (V73197)) | | 2 |

52-11-84

ILLUSTRATED PARTS LIST

01.1

Page 1019

Jul 01/05

| FIG. & ITEM | PART NO. | AIRLINE PART NUMBER | NOMENCLATURE 1234567 | EFF CODE | QTY PER ASSY |
|-------------|------------|---------------------|---|----------|--------------|
| 01-190 | HL13VAZ6-3 | | ..BOLT- (V56878) (SPEC BACB30NY6K3) (OPT HL13VAZ6-3 (V73197)) (OPT HL13VAZ6-3 (V92215)) (OPT HL13VAZ6-3 (V97928)) (OPT L801-6K3 (V06725)) (OPT HL13VAZ6-3 (V08524)) (OPT HL13V3 (V06725)) (OPT HL13VAZ6-3 (V17446)) | | 2 |
| 195 | HL1187-6 | | ..COLLAR- (V5M902) (SPEC BACC30X6) (OPT HL87-6 (V73197)) (OPT HL87-6 (V92215)) (OPT HL1187-6 (V56878)) (OPT HL1187-6 (V92215)) (OPT HL87-6 (V56878)) (OPT HL1187-6 (V73197)) | | 4 |

52-11-84

 ILLUSTRATED PARTS LIST
 01.1 Page 1020
 Jul 01/05



BOEING
 COMPONENT
 MAINTENANCE MANUAL

| FIG. & ITEM | PART NO. | AIRLINE PART NUMBER | NOMENCLATURE 1234567 | EFF CODE | QTY PER ASSY |
|-------------|-------------|---------------------|---|----------|--------------|
| 01- | | | | | |
| 200 | 146T6107-17 | | ..STRINGER | | 1 |
| 205 | 141T6238-5 | | ..SPLICE- (OPT ITEM 205A) | | 1 |
| R -205A | 141T6345-1 | | ..SPLICE- (OPT ITEM 205) | | 1 |
| 210 | 141T6238-6 | | ..SPLICE- (OPT ITEM 210A) | | 1 |
| R -210A | 141T6345-2 | | ..SPLICE- (OPT ITEM 210) | | 1 |
| 215 | HL13VAZ10-9 | | .BOLT- (V56878) (SPEC BACB30NY10K9) (OPT HL13VAZ10-9 (V73197)) (OPT HL13VAZ10-9 (V92215)) (OPT HL13VAZ10-9 (V97928)) (OPT L801-10K9 (V06725)) (OPT HL13VAZ10-9 (V08524)) (OPT HL13V9 (V06725)) (OPT HL13VAZ10-9 (V17446)) | | 2 |
| R 217 | BACB30NR4K7 | | .BOLT | | 4 |
| R 218 | BACB30NR4K5 | | .BOLT | | 4 |
| 220 | HL1187-10 | | .COLLAR- (V5M902) (SPEC BACC30X10) (OPT HL87-10 (V73197)) (OPT HL87-10 (V92215)) (OPT HL1187-10 (V56878)) (OPT HL1187-10 (V92215)) (OPT HL87-10 (V56878)) (OPT HL1187-10 (V73197)) | | 2 |

52-11-84

ILLUSTRATED PARTS LIST
 01.1 Page 1021
 Jul 01/05

| FIG. & ITEM | PART NO. | AIRLINE PART NUMBER | NOMENCLATURE 1234567 | EFF CODE | QTY PER ASSY |
|-------------|---------------------|---------------------|---|----------|--------------|
| 01- 225 | 146T6107-41 | | . FILLER- (LIMITED) (OPT ITEM 225A) | A,B | 2 |
| R -225A | 146T6105-74 | | . FILLER- (LIMITED) (OPT ITEM 225) | A,B | 2 |
| R -225B | 146T6105-74 | | . FILLER | C,D | 2 |
| | 227 MS21042L4 | | . NUT | | 8 |
| | 228 AN96OKD416L | | . WASHER | | 8 |
| | 230 143T6105-67 | | . CLIP | | 1 |
| | 235 146T6107-28 | | . CLIP | | 1 |
| | 240 146T6107-43 | | . FILLER | | 1 |
| | 245 146T6107-25 | | . SUPPORT-LWR | | 1 |
| | 247 BACR15BA6AD | | . RIVET- (SIZE DETERMINE ON INST) | | 2 |
| | 248 284T0867-4 | | DELETED | | |
| R 248A | 284T0867-1 | | . ANGLE | A,C | 1 |
| | 250 BACB30NT3K8 | | . BOLT | | 4 |
| | 255 AN96OKD10L | | . WASHER | | 4 |
| | 260 MS21042L3 | | . NUT | | 4 |
| | 265 146T6107-63 | | . RETAINER-BRG | | 2 |
| | 270 MS27648-23G | | . BEARING | | 2 |
| | 275 141T6236-3 | | . TRACK ASSY | | 1 |
| | 280 BACB28AM07B013A | | .. BUSHING | | 2 |
| | 285 141T6236-5 | | .. TRACK | | 1 |
| | 290 141T6237-5 | | . TRACK ASSY | | 1 |
| | 295 BACB28AM07B013A | | .. BUSHING | | 1 |

52-11-84

ILLUSTRATED PARTS LIST

01.1

Page 1022

Jul 01/05


BOEING
 COMPONENT
 MAINTENANCE MANUAL

| FIG. & ITEM | PART NO. | AIRLINE PART NUMBER | NOMENCLATURE 1234567 | EFF CODE | QTY PER ASSY |
|-------------|----------------|---------------------|--|----------|--------------|
| 01- | | | | | |
| 300 | BACB28AP05P013 | | ..BUSHING | | 1 |
| 305 | 141T6237-4 | | ..TRACK | | 1 |
| 310 | 141T6180-9 | | .LATCH-CAM | A,C | 1 |
| -315 | 141T6180-8 | | .LATCH-CAM | B,D | 1 |
| 320 | HL13VAZ5-5 | | .BOLT- (V56878) (SPEC BACB30NY5K5) (OPT HL13VAZ5-5 (V73197)) (OPT HL13VAZ5-5 (V92215)) (OPT HL13VAZ5-5 (V97928)) (OPT L801-5K5 (V06725)) (OPT HL13VAZ5-5 (V08524)) (OPT HL13V5 (V06725)) (OPT HL13VAZ5-5 (V17446)) | | 4 |
| 325 | HL1187-5 | | .COLLAR- (V5M902) (SPEC BACC30X5) (OPT HL87-5 (V73197)) (OPT HL87-5 (V92215)) (OPT HL86PB5 (V73197)) (OPT HL86PB5 (V56878)) (OPT HL86PB5 (V92215)) (OPT HL1187-5 (V56878)) (OPT HL1187-5 (V92215)) (OPT HL87-5 (V56878)) (OPT HL1187-5 (V73197)) | | 4 |

52-11-84

ILLUSTRATED PARTS LIST

01.1

Page 1023

Jul 01/05

| FIG. & ITEM | PART NO. | AIRLINE PART NUMBER | NOMENCLATURE 1234567 | EFF CODE | QTY PER ASSY |
|-------------|-------------|---------------------|--|----------|--------------|
| 01-330 | BACB30MY6K4 | | .BOLT | | 4 |
| 335 | HL79-6 | | .COLLAR- (V5M902) (SPEC BACC30M6) (OPT HL79-6 (V73197)) (OPT HL79-6 (V92215)) (OPT 66014-6 (V56878)) (OPT HL79-6 (V56878)) | | 4 |
| 340 | 146T6107-21 | | .CLIP | | 1 |
| 345 | 146T6107-22 | | .CLIP | | 1 |
| 350 | 146T6107-23 | | .ANGLE | | 1 |
| R 353 | 143T6105-9 | | .STRIP-RUB | | 4 |
| 355 | 143T6124-1 | | .TRACK-FWD | A,C | 1 |
| -360 | 143T6124-3 | | .TRACK-FWD | B,D | 1 |
| 365 | 143T6124-2 | | .TRACK-AFT | A,C | 1 |
| -370 | 143T6124-4 | | .TRACK-AFT | B,D | 1 |

- Item Not Illustrated

52-11-84

ILLUSTRATED PARTS LIST

01.1

Page 1024

Jul 01/05